

Data Sheet



Huawei Symantec

Oceanspace™ S5500T/S5600T/S5800T/S6800T T-Series Storage Systems



Scalable Mid-Range Storage System

HIGHLIGHTS

- Highly-Scalable up to 2.8PB
- High Port Density
- High Availability
- Superior Performance up to 150,000 IOPS
- SmartCache to boost performance of mission-critical application
- iSCSI and/or FC SAN
- Tiered Storage across FC, SAS, SATA, and SSD drives
- Advanced Data Protection and Disaster Recovery
- Energy-efficient technologies

Oceanspace T-Series

High Performance and Highly-Scalable Mid-Range Systems

Mid-Range Enterprise Storage that Drives Down Cost of Ownership

The explosive growth of data is causing IT infrastructure to consolidate their systems to improve the methods by which they store, manage and protect their data. Consolidation of IT infrastructure demands higher performance, extended scalability and more reliable storage architecture.

Huawei Symantec's Oceanspace™ T-Series (S5500T, S5600T, S5800T, and S6800T) is the next generation of highly-scalable storage designed to meet the requirements of today's demanding storage environments. The T-Series simplifies consolidation and management for over 2.8PB of data.

Modularity for the Enterprise SAN Infrastructure

The T-Series provides you with high port density Fibre Channel and /or iSCSI connectivity modules to seamlessly fit into your existing SAN infrastructure.

Scaling Capacity and Performance

The T-Series is built using a unique SmartCache performance-accelerated architecture to provide maximum IOPS. Customers can order a combination of 1/10GE (iSCSI), or 8Gb FC for high throughput iSCSI networking connectivity.

Data Protection

The T-Series provides enterprise-class reliability, best-in-class RAID protection, and is designed for high availability with no single point of failure. The T-Series' non-intrusive backup and replication technology allows the users to experience uninterrupted high-speed access to their data. Productivity never suffers to accommodate a backup or replication window.

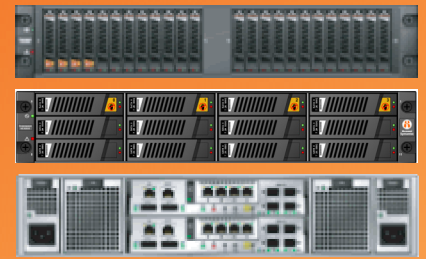
Unified Management

Simple, policy-driven unified management that controls data protection, DR, system management and system energy efficiency.

T-Series Controllers

Model	Size	Disks (internal)	Disks (total)
S5500T	2U	12 x 3.5"	288 SSD, SAS, or SATA
		24 x 2.5"	
S5600T	4U	NA	576 SSD, SAS, SATA, NL-SAS
S5800T	4U	NA	1,152 SSD, SAS, SATA, NL-SAS
S6800T	4U	NA	1,440 SSD, SAS, SATA, NL-SAS

S5500T



S5600T, S5800T, S6800T



T-Series Disk Enclosures

Model	Size	Disks per Tray	Disks (SSD, SAS, SATA, FC)	Max Capacity
DAE12425U2	2U	24	2.5"	24TB
DAE12435U4	4U	24	3.5"	48TB

DAE12425U2



DAE12435U2



T-Series Disk Drives

Model	Size	SATA HDDs	SAS HDDs	SSDs	NL-SAS
DAE12425U2	2.5"	500GB 7.2K RPM	300GB 10K RPM 600GB 10K RPM	100GB	1TB 7.2K RPM
DAE12435U4	3.5"	1TB 7.2K RPM 2TB 7.2K RPM	300GB 15K RPM 450GB 15K RPM 600GB 15K RPM	100GB	2TB 7.2K RPM

Hardware Specifications

Model	S5500T	S5600T	S5800T	S6800T
CPU Type/ Controller	1 x Celeron dual-core		2 x Xeon quad-core	
Number of controllers	2	2	2	2
System cache	8GB / 16GB/32GB	24GB/48GB	48GB/96GB	48GB/ 96GB/192GB
Smart cache	1200GB	2400GB	3600GB	4800GB
Front end host ports	8Gb FC 1/10GE (iSCSI)	8Gb FC 1/10GE (iSCSI)		
Back end storage ports	6Gb SAS2.0 wide ports	4Gb FC or 6Gb SAS2.0 wide ports		
Maximum IO modules	2	10	12	12
Maximum disk slots	288	576	1,152	1,440
Supported disk types	SAS, SATA, SSD	SAS, SATA, SSD, NL-SAS		

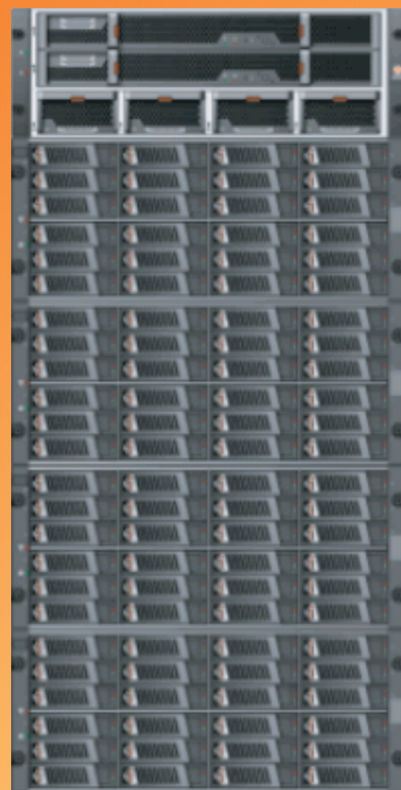
System Features

Model	S5500T	S5600T	S5800T	S6800T
Supported RAID	0, 1, 3, 5, 6, 10, 50			
Number of hosts	512	1,024	1,024	1,024
Number of LUNs	2,048	4,096		
Number of snapshots	1,024	2,048		
Operating Systems	AIX, HPUX, Solaris, Linux, Windows			

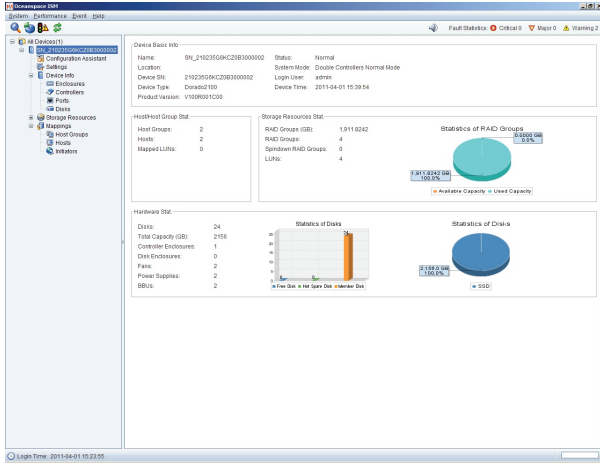
Physical Specifications

Model	S5500T	S5600T	S5800T	S6800T
Controller dimensions	Height 3.39" Width 17.56" Depth 22.91"	Height 6.89" Width 17.56" Depth 19.76"		
Disk Enclosure dimensions	2U Disk Enclosure (Height 3.39", Width 17.56", Depth 16.22") 4U Disk Enclosure (Height 6.89", Width 17.56", Depth 16.22")			
Power Supply	AC: 100v ~ 127v or 200v ~ 240v DC: -48v ~ -60v			
Disk Enclosure Electrical power	2U Disk Enclosure with 24 600GB SAS: 550W 4U Disk Enclosure with 24 600GB SAS: 550W			
Controller weight	<=52.69 lbs.	<=96.12 lbs.		
Disk Enclosure weight	2U SAS Disk Enclosure <= 32.85 lbs. 4U SAS Disk Enclosure <= 55.56 lbs. 4U FC Disk Enclosure <= 54.90 lbs.			

T-Series



Software Specification



System Management Attributes	
Integrated System Management	<ul style="list-style-type: none"> • Single-point of management for all HS storage systems • RAID controller management • Controller and Disk sub-system management • FC & iSCSI interface management
Standard management features	Manage up to 512 systems Replication management Automated system configuration and backup Policy-based management Out-of-band Ethernet management network Enhanced system monitoring and reporting
Management interfaces	GUI based: HTTP, HTTPS CLI-based: Telnet, Serial Scripting: Allows for more user control
Secure management access	SSL SSH
Management access control	User/Password authentication Management port definition Management access method
SNMP support	SNMP SNMP Traps

Protocols Supported	
Network protocol support	<ul style="list-style-type: none"> • iSCSI • FC • File Transfer Protocol (FTP)
Management protocols	HTTP, SSL, SSH, SNMP Email Alerts

Supported Features		
Standard Features:	<ul style="list-style-type: none"> • Centralized Management 	An advanced GUI that provides a single point of management for all Huawei Symantec storage systems
	<ul style="list-style-type: none"> • Smart Cache 	Increases performance by copying frequently accessed data on the HDD to SSD
	<ul style="list-style-type: none"> • Dynamic Traffic Control (DTC) 	Prioritizes activity between the host IO and disk array reconstruction traffic
	<ul style="list-style-type: none"> • RAID Group Expansion 	Allows RAID Groups to be expanded on the fly without any downtime
	<ul style="list-style-type: none"> • VAAI 	Offloads block level functions from VMWare, thus leading to increased efficiency
Optional Features:	<ul style="list-style-type: none"> • HyperThin 	Thin Provisioning capability provides for better storage utilization and leads to a significant cost savings
	<ul style="list-style-type: none"> • Hyperclone 	Creates a complete local physical copy for the LUN at a point in time used for test environment, online backup and data mining
	<ul style="list-style-type: none"> • HyperImage™ 	Point-in-time Snapshot Technology: Allows for fast recovery of data needed for compliance and/or DR
	<ul style="list-style-type: none"> • HyperMirror™ 	Synchronous or asynchronous remote replication of LUNS or DR
	<ul style="list-style-type: none"> • HyperCopy™ 	Provides full copies of local LUNS to LUNS within a remote array
	<ul style="list-style-type: none"> • DiskGuard™ 	Continuously captures changed blocks of data and transfers them to a backup array
	<ul style="list-style-type: none"> • UltraPath 	High availability software within multi-pathing environments
	<ul style="list-style-type: none"> • HostAgent™ 	Agent software to ensure data consistency across user applications
<ul style="list-style-type: none"> • WORM 	LUNS can be set to Write Once Read Many for read-only use	



Huawei Symantec

Huawei Symantec Technologies Co., Ltd.

20400 Stevens Creek Blvd., Suite 200, Cupertino, CA 95014 USA

Tel: 408-459-4000 Toll Free: 877-618-4762 Fax: 408-459-4200

Email: infoUS@huaweisymanterc.com

www.huaweisymanterc.us